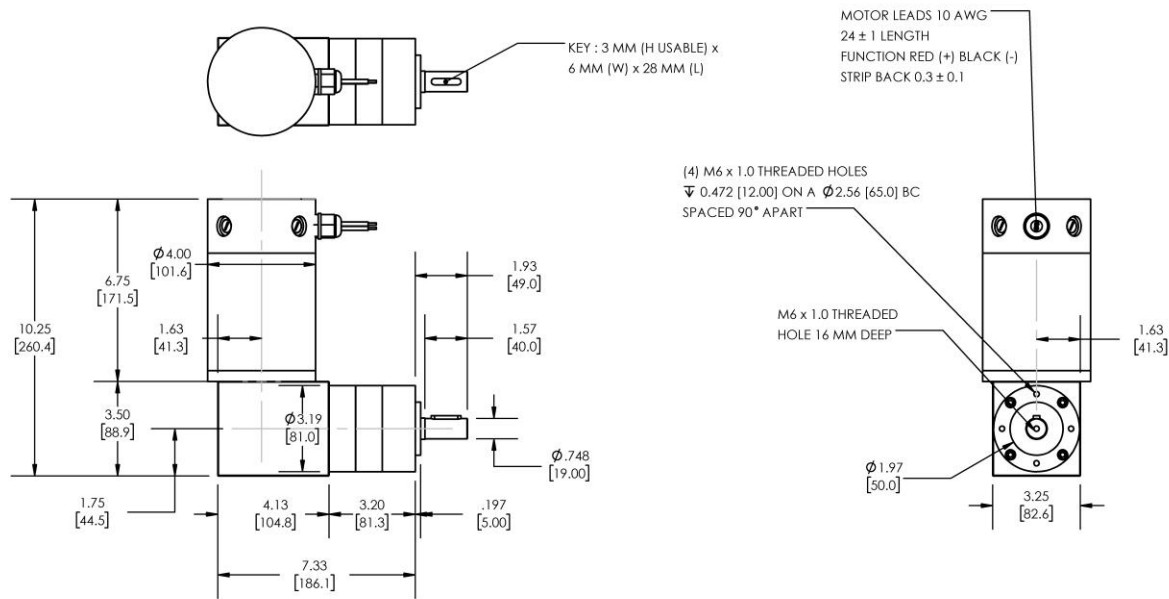


Model Number:

MMP D40-675G-90V GRA81-025



DIMENSIONS ARE INCHES [MM] UNLESS OTHERWISE STATED

| PLANETARY GEARMOTOR OUTPUT PARAMETERS: | VALUE | UNITS | TOLERANCE |
|--|---------------|-------------|-----------|
| Gearhead Ratio (exact) | 25.01 : 1 | | |
| Gearhead Shaft Output Speed (at full-load) | 149 | RPM | MAX |
| Gearmotor Rated Continuous Torque | 243 | In-Lbs | MAX |
| Gearmotor Rated Peak Torque | 1062++ | In-Lbs | ---- |
| Gearhead Standard Backlash | 33 | Arc Minutes | MAX |
| Gearhead Efficiency | 75% | ---- | ---- |
| Output Shaft Radial Load Capacity | 135 | Lbs | MAX |
| Output Shaft Axial Load Capacity | 27 | Lbs | MAX |
| Gearmotor Total Weight | 20 | Lbs | MAX |

++ All Peak Torque values are dependent upon duty. Contact our sales office for details.

| DC MOTOR PERFORMANCE PARAMETERS: | VALUE | UNITS | TOLERANCE |
|----------------------------------|-------|-----------|-----------|
| Rated DC Voltage | 90 | DC VOLTS | ---- |
| Rated Continuous Current | 7.8 | AMPERES | ---- |
| No-Load Speed | 3982 | RPM | MAX |
| Rated Speed | 3739 | RPM | +/- 15% |
| Rated Continuous Power Out | 573 | WATTS | +/- 15% |
| Rated Continuous Torque | 207 | OZ-IN | ---- |
| Peak Torque (motor only) | 2596 | OZ-IN | ---- |
| No-Load Current | 1.01 | AMPERES | MAX |
| Back EMF Constant (Ke) | 22.6 | V/KRPM | +/- 10% |
| Torque Constant (Kt) | 30.6 | OZ-IN/AMP | +/- 10% |
| DC Armature Resistance | 0.71 | OHMS | +/- 15% |
| Armature Inductance | 1.11 | mH | +/- 15% |
| Armature temperature | 155 | DEG. C | MAX |

NOTES:

- ENCODER & BRAKE OPTIONS AVAILABLE – [FOLLOW THIS LINK FOR DETAILS](#)
- NEMA MOUNTING FLANGE OPTION AVAILABLE – [FOLLOW THIS LINK FOR DETAILS](#)

MIDWEST MOTION PRODUCTS, INC

DESIGN, MANUFACTURING & DISTRIBUTION - MOTION CONTROL EQUIPMENT

www.midwestmotion.com

email: sales@midwestmotion.com